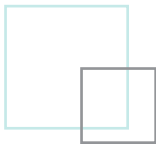

NEBRASKA UNITED METHODIST CONFERENCE

Staff List

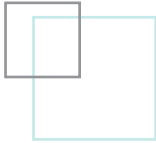


2011



Our mission

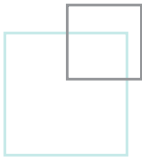
Our work together in ministry is to make disciples of Jesus Christ whom God can use to help transform the world. Living in service to one another in Christ-like fashion to bring about God's kingdom here on earth.



Our vision

Our vision is to be a conference full of dynamic churches sharing and proclaiming the Gospel of Jesus Christ, marked by signs of vital discipleship:

- RADICAL HOSPITALITY
- HEARTWARMING WORSHIP
- RISK-TAKING MISSION AND JUSTICE WORK
- VITAL FAITH FORMATION AND PRAYER
- GRACIOUS GENEROSITY
- CONNECTIONAL JOY AND COMMITMENT



Strategic priorities

Three strategic initiatives guide the work of the Nebraska United Methodist Conference, with the greatest importance on leadership development.



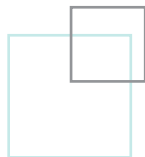


Our core values

We believe that God, through Jesus Christ and the work of the Holy Spirit, offers grace and salvation to all persons. This is central to our core values.

WE VALUE:

- **every person. every person is of sacred worth, created and made in the image of God.**
- **the centrality of faith in Jesus Christ, the true Son of God, sent to bring redemption and salvation to the world.**
- **the Holy Spirit that dwells within and among us to empower us for ministry.**
- **ministry in all parts of our conference — rural and urban. We value the heritage and potential of small membership churches.**
- **the Word of God, which we believe is made flesh and dwells among us in Jesus the Christ and is revealed to us through Scripture, reason, experience and tradition.**
- **the calling of each person to share the good news of Jesus Christ and to make disciples in his name.**
- **our Wesleyan heritage as a covenant community that lives out both social holiness and personal piety.**
- **the ministry of all believers, lay and clergy, as we serve together to transform the world.**
- **differences as we seek richness in diversity and integrity in inclusivity.**



Episcopal Office



BISHOP ANN B. SHERER-SIMPSON

RESIDENT BISHOP — NEBRASKA AREA

bishop@umcneb.org

402.466.4955

Bishop Sherer-Simpson was ordained in the Texas Conference as a deacon in 1976 and as an elder in 1978. While in the Texas Conference she served pastorates in White Oak, Texarkana and Houston (Westbury United Methodist Church), and also served as superintendent of the Nacogdoches District. She was elected and consecrated to the Office of Bishop at the 1992 South Central Jurisdictional Conference and

assigned to the Missouri Area where she served as resident bishop from 1992 to 2004. She was assigned to the Nebraska Area at the 2004 South Central Jurisdictional Conference.

Bishop Sherer-Simpson was a delegate to The United Methodist Church's General and Jurisdictional Conferences in 1984, 1988 and 1992. She was the chairperson of the Council of Bishops Initiative on Children and Poverty from 2000 to 2004 and of the Committee on World Wide Ministry Through the United Methodist Church from 2004 to 2008.

She served on The UMC General Board of Discipleship from 1997 to 2004 and served on the Book of Worship Committee from 1988 to 1992. From 1992 to 1996 she was president of the Commission on Status and Role of Women and from 2004 to 2008 she was president of the UMC's General Commission on Christian Unity and Interreligious Concerns.

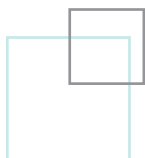
She is currently vice chair of the Board of Trustees of Saint Paul School of Theology, and a member of the boards of trustees of the Lydia Patterson Institute, Southern Methodist University, Nebraska Wesleyan University, Nebraska Methodist College and BryanLGH. She has visited churches and shared in mission in Zimbabwe, Mozambique, Nigeria, South Africa, Korea, Brazil, Cuba, Guatemala, Mexico, Finland, Nicaragua, Estonia, Pakistan, Afghanistan and the Middle East.

She is married to Wayne E. Simpson, a retired engineer. Her children continue to live in the Texas area where she served prior to her election to the episcopacy. Her son Robbie, his wife Jennifer and their son Max live in Houston. Daughter Ann Marie Trammell, her husband Brian and their son Michael live in Fort Worth.

ELAINE MICHAUD
ADMINISTRATIVE ASSISTANT
emichaud@umcneb.org
402.466.4955



The administrative assistant supports the resident area bishop and manages the Episcopal office's finances in consultation with the conference treasurer's office. Manages all correspondence, makes travel arrangements and maintains bishop's calendar. Responsible for general upkeep and care of the Episcopal residence. Elaine has served the Nebraska Conference since 1962.



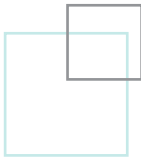
DCM & Staff Leader



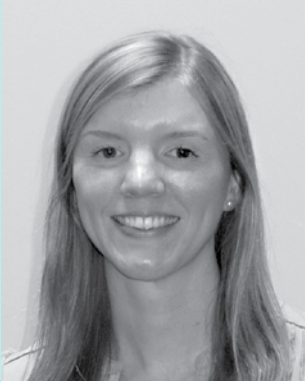
**REV. DR. CAROL
ROETTMER BREWER**
DIRECTOR OF CONNECTIONAL
MINISTRIES/STAFF LEADER
crbrewer@umcneb.org
402-464-5994, ext. 111

The director of connectional ministries/staff leader serves as steward of the vision to make disciples of Jesus Christ for the transformation of the world, guiding the mission and ministry of the Nebraska United Methodist Church. The DCM works closely with the Common Table, the Council on Finance and Administration, the Cabinet, the

Board of Ordained Ministry and Conference staff to ensure the alignment of the total resources of the Conference to its vision and to the priorities of the Conference. Serves as primary staff person to all ministry and functions of the Common Table. Establishes systems to help local congregations become more fruitful and faithful in implementing the six signs of discipleship. Responsible for the direction and supervision of the Conference staff. Works with the bishop to set theme and direction for annual conference sessions and called clergy sessions. Member of the Cabinet.



Program Directors



DANA LATTIMORE
ADMINISTRATIVE ASSISTANT
dlattimore@umcneb.org
402.464.5994, ext. 105

Provides administrative assistance to the director of connectional ministries/staff leader. Assists with managing project time lines and planning of large events including Annual Conference Session and Clergy Special Session. Supports the director of lay speaking ministries with special projects. Also provides support for monthly meetings of The Common Table and Teams.

REV. DR. JESSE FOSTER
DIRECTOR OF CHRISTIAN
LEADERSHIP DEVELOPMENT
jfoster01@umcneb.org
402.464.5994, ext. 109



Responsible for clergy and lay leadership development for the Conference, as well as leadership development as it relates to camping. Supports, resources and empowers Conference and district leaders, leadership groups and local congregations to become increasingly effective in making disciples of Jesus Christ. Establishes systems to help local congregations become more fruitful and faithful in implementing the six signs of discipleship. Works with Conference, district and local groups to develop youth and young adult ministries. Member of the Cabinet.

REV. NITA HINDS-PARK
DIRECTOR OF
CONGREGATIONAL DEVELOPMENT
nita@umcneb.org
402.464.5994, ext. 110



Staff liaison to the Congregational Transformation Team. Leads the Conference in revitalizing existing congregations and in the development of new faith communities. Recruits, assesses and trains new-start pastors and offers them coaching and support. Administers and organizes the New Start Pastor Academy. Staff liaison to Hispanic and Native American Ministries. Member of the Cabinet.

and Staff

REV. CAROL WINDRUM

DIRECTOR OF RISK-TAKING
MISSION AND JUSTICE

cwindrum@umcneb.org

402.981.9733



Works with the Risk-taking Mission and Justice Ministries Team to equip Nebraska United Methodists to engage in risk-taking mission that leads to faithful action, including the promotion of Volunteers in Mission. Also helps members engage in justice ministries to eliminate systems of oppression within communities and the world. Informs local church members about current and complex social justice concerns and creates a climate of caring dialogue. Mentors young adults in risk-taking mission and justice and strengthens the connections between local churches and the General Boards of Global Ministries and Church and Society. Member of the Cabinet.



DIANE DUNKERSON

DIRECTOR OF RESOURCE
CENTER FOR CHURCHES

ddunkerson@umcneb.org

402-464-5994, ext. 106

Provides quality educational resources for use in the local church through an ecumenical partnership. There are more than 3,000 video resources available for Bible studies, small groups, men's groups, retreats, counseling, women's groups, confirmation, youth groups or Sunday school classes. The Center is open Monday-Friday, 9 a.m.-12 p.m. and 1 p.m.-5 p.m. Diane also serves as receptionist.



KATHRYN WITTE
DIRECTOR OF
MARKETING AND COMMUNICATIONS
kwitte@umcneb.org
402.464.5994, ext. 113

Directs and implements the overall marketing communications plan for the Conference. Is the advocate for the Conference brand and consistent use of its logo and graphic standards. Publisher/editor of the “Nebraska Messenger” newspaper; responsible for all aspects of Conference electronic and social media. Serves as consultant/trainer for districts and local churches on marketing communications

topics and skill development. Provides media training to conference leadership to enhance their ability to manage and relate to the media, and takes the lead in crisis communications situations. Member of the Cabinet.

TRISHA JOHNSON
COMMUNICATIONS COORDINATOR
tjohnson@umcneb.org
402.464.5994, ext. 115

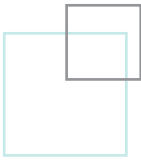


Offers support to the communications director. Contributes to the “Nebraska Messenger” and “UMconnect,” including writing and editing copy. Keeps the Conference website fresh and up-to-date. Also helps with the development of printed material and video resource material as well as social media, such as the Conference Facebook page and Twitter account.

ROXIE DELISI
CIRCULATION
MANAGER/SERVICES SUPPORT
rdelisi@umcneb.org
402.464.5994, ext. 107



Responsible for maintaining the Conference database; serves as circulation manager for the “Nebraska Messenger.” Collects information for and prepares the workbook for the annual conference session and edits and prepares the Conference Journal. Provides other graphic production and clerical support.



Administrative Director and Staff



ROBIN KILGORE
CONFERENCE TREASURER, DIRECTOR
OF ADMINISTRATIVE SERVICES
rkilgore@umcneb.org
402.464.5994, ext. 117

Overses the financial and administrative services of the Conference. Available for consultation with pastors, church treasurers and appropriate church committees regarding financial reporting, pastor compensation reports, employee benefit programs and other administrative issues. Serves as the staff liaison to Conference Trustees and Council on Finance and Administration. Member of the Cabinet.

SHEREE BROWN
ADMINISTRATIVE ASSISTANT
sbrown@umcneb.org
402.464.5994, ext. 114

Provides clerical and administrative support to Conference treasurer/director of administrative services. Coordinates pastor moves every year after new appointments are made. Participates in annual conference session planning. Provides support for the Conference Safe Sanctuaries program.



LORIE LINDENMUTH
COMPTROLLER
llindenmuth@umcneb.org
402.464.5994, ext. 119

Responsible for the financial transactions of the Conference, and the proper recording and reporting of those transactions. Prepares payroll for Conference and district staff. Responsible for annual auditing of the books by an outside auditing firm. Responds to questions and special requests from Conference treasurer, staff and committees.



CAROLE OTTO

ASSISTANT BENEFITS OFFICER

cotto@umcneb.org

402.464.5994, ext. 108

Responsible for the administration of the total benefits package of the Nebraska United Methodist Conference for clergy and lay employees. This includes pension, health insurance, death and disability insurance and AFLAC supplemental insurance. Also serves as statistical coordinator, and is responsible for the yearly collection of statistical data from local churches as required by the “Book of Discipline” and the General Council on Finance and Administration.

TINA WATTEYNE

SENIOR ACCOUNTING CLERK

twatteyne@umcneb.org

402.464.5994, ext. 118

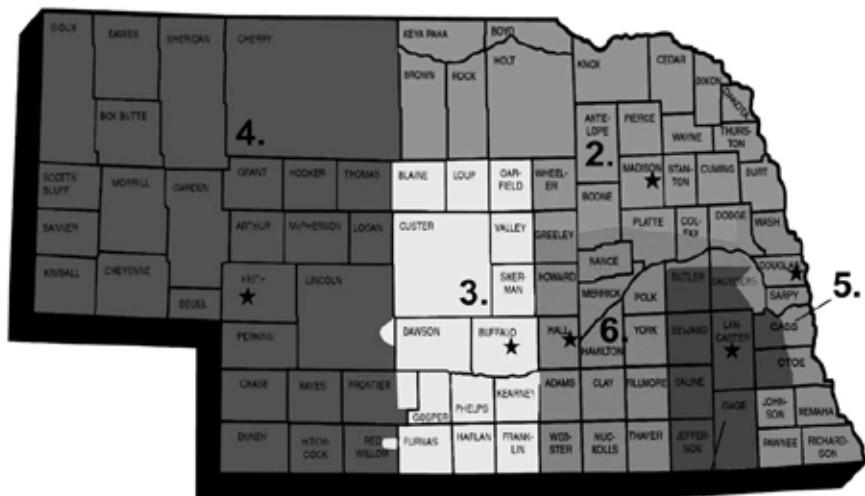
Responsible for accurate and timely processing of all Conference remittances and preparation of payment vouchers. Prepares and mails monthly statements for local churches; prepares monthly financial reports for Conference treasurer, the bishop, the director of connectional ministries and the district superintendents. Maintains records of all contributions made to special offerings and regular Mission Share commitments.



We have gifts that differ according to the grace given to us: prophecy, in proportion to faith; ministry, in ministering; the teacher, in teaching; the exhorter, in exhortation; the giver, in generosity; the leader, in diligence; the compassionate, in cheerfulness. Let love be genuine; hate what is evil, hold fast to what is good; love one another with mutual affection; outdo one another in showing honor. Do not lag in zeal, be ardent in spirit, serve the Lord.

Romans 12:6-8

District Superintendents & Administrative Assistants



1. Blue River District
2. Elkhorn Valley District
3. Gateway District
4. Great West District
5. Missouri River District
6. Prairie Rivers District

District superintendents are appointed by the bishop to the Cabinet to serve as an extension of the oversight and supervision of the bishop for a district and for the Conference. District superintendents cooperate with the bishop, staff parish relations committee and local churches to provide pastoral leadership for each congregation. They also strengthen the mission of the church by connecting the local church with the Conference and the worldwide United Methodist Church.

District administrative assistants perform administrative, secretarial, clerical and support duties for a district superintendent, the Conference and the churches within their assigned district.



REV. GALEN WRAY
DISTRICT SUPERINTENDENT
BLUE RIVER DISTRICT
100 W. FLETCHER, #100
LINCOLN, NE 68521
gwrays@umcneb.org
402.323.8849



JOYCE RIVERA
ADMINISTRATIVE ASSISTANT
BLUE RIVER DISTRICT
blueriver@umcneb.org
jrivera@umcneb.org
402.323.8849



REV. NAN KAYE-SKINNER
DISTRICT SUPERINTENDENT
ELKHORN VALLEY DISTRICT
P.O. BOX 1283
NORFOLK, NE 68702
nkaye-skinner@umcneb.org
402.371.1313



SUE JENSEN
ADMINISTRATIVE ASSISTANT
ELKHORN VALLEY DISTRICT
elkhornvalley@umcneb.org
sjensen@umcneb.org
402.371.1313

REV. ALAN DAVIS

**DISTRICT SUPERINTENDENT
GATEWAY DISTRICT
P.O. BOX 995
KEARNEY, NE 68848
adavis@umcneb.org
308.234.3098**



PEG VAVRICEK

**ADMINISTRATIVE ASSISTANT
GATEWAY DISTRICT
gateway@umcneb.org
pvavricek@umcneb.org
308.234.3098**



REV. KAY ALNOR

**DISTRICT SUPERINTENDENT
GREAT WEST DISTRICT
P.O. BOX 56
OGALLALA, NE 69153
kalnor@umcneb.org
308.284.8922**



CHRISTINA BALTZELL

**ADMINISTRATIVE ASSISTANT
GREAT WEST DISTRICT
greatwest@umcneb.org
cbaltzell@umcneb.org
308.284.8922**





REV. DR. DAN FLANAGAN

**DISTRICT SUPERINTENDENT
MISSOURI RIVER DISTRICT
2665 FARNAM, SUITE 102
OMAHA, NE 68131
dflanagan@umcneb.org
402.898.9862**



CATHERINE MCGOWAN

**ADMINISTRATIVE ASSISTANT
MISSOURI RIVER DISTRICT
missouririver@umcneb.org
cmcgowan@umcneb.org
402.898.9862**



REV. DR. HAROLD BACKUS

**DISTRICT SUPERINTENDENT
PRAIRIE RIVERS DISTRICT
207 N. PINE, #102
GRAND ISLAND, NE 68801
hbackus@umcneb.org
308.384.0603**



LINDA NEVILLE

**ADMINISTRATIVE ASSISTANT
PRAIRIE RIVERS DISTRICT
prairierivers@umcneb.org
lneville@umcneb.org
308.384.0603**

Conference purpose

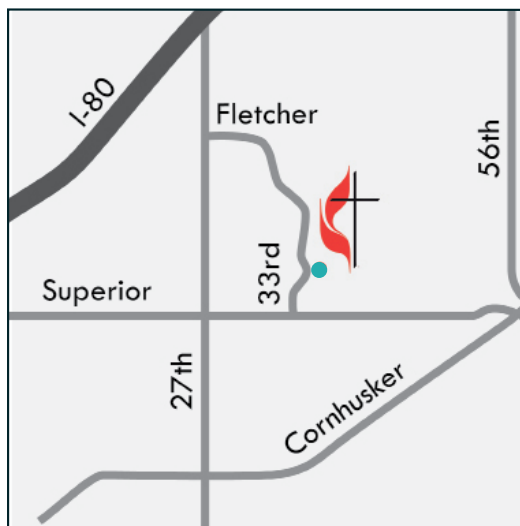
“The purpose of the annual conference is to make disciples for Jesus Christ

by equipping local churches for ministry and by providing a connection for ministry beyond the local church; all to the glory of God.”

□ Book of Discipline ¶601

Conference center

From I-80 Exit to N 27th Street



3333 Landmark Circle
Lincoln, NE 68504-4760
402-464-5994
402-464-6203 fax
www.umcneb.org
info@umcneb.org

Office Hours:
8:30 a.m.-5 p.m.

From south Lincoln on 27th Street



NEBRASKA
CONFERENCE

3333 Landmark Circle
Lincoln, NE 68504

402-464-5994 | 800-435-6107

Fax: 402-464-6203

www.umcneb.org
info@umcneb.org
